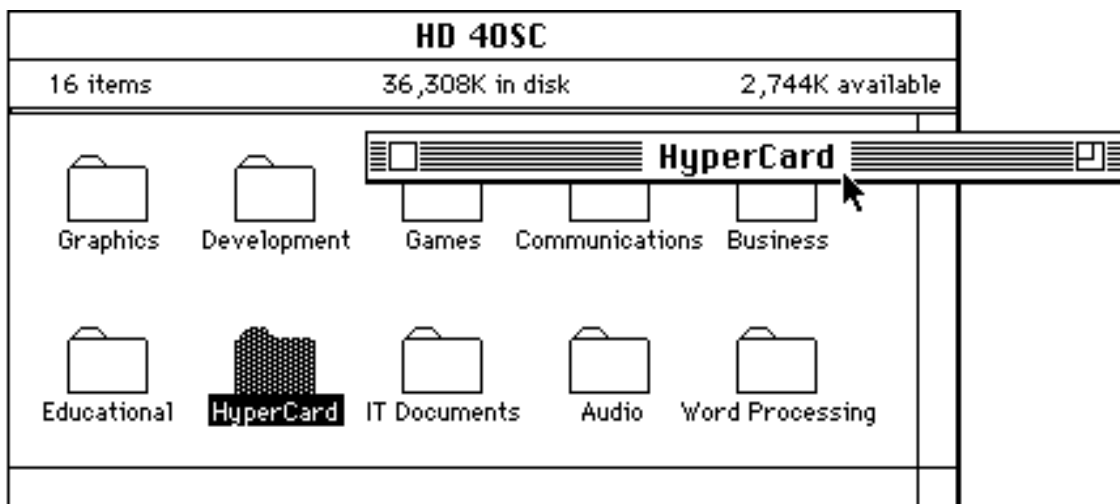


WindowShade

Version 1.1

WindowShade is a unique window enhancement utility for the Macintosh. WindowShade gets its name from the old window blinds that roll up when given a sturdy pull. This utility brings the same functionality to Macintosh windows.

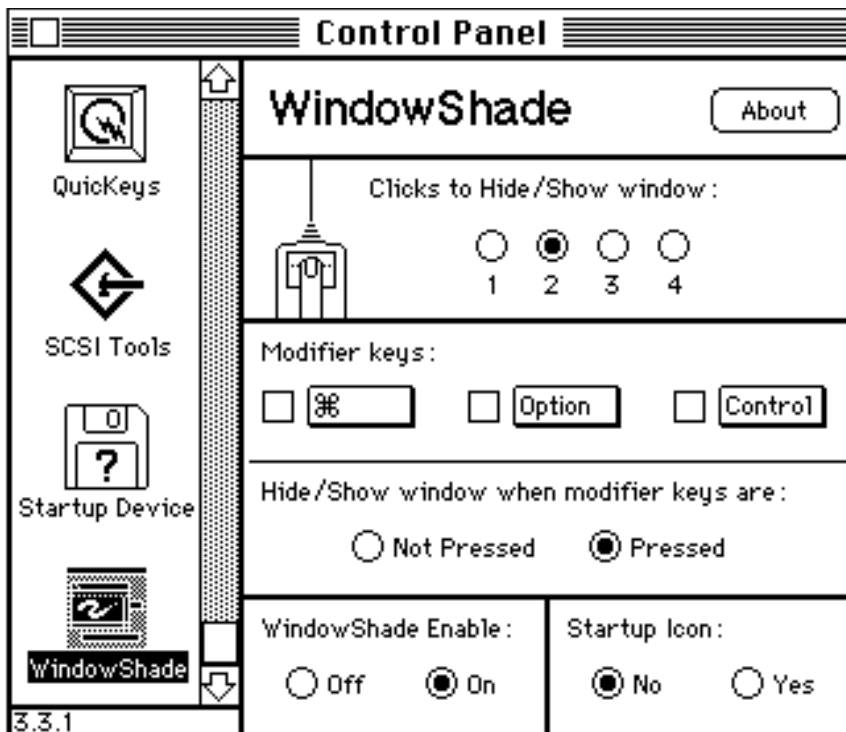
By placing the WindowShade cdev into the System Folder, and restarting your Macintosh, your windows are given a brand new feature. By double clicking anywhere on the title bar of the window, the lower part of the window will 'roll up' underneath the title bar. Double clicking on the title bar again will lower the window to its original size.



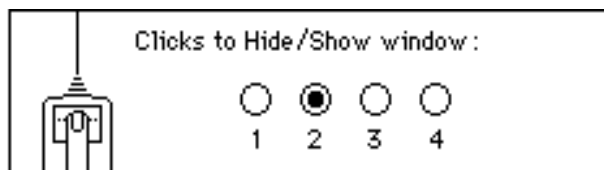
This feature is very useful when you need to click on something that is behind an open window, or to shrink down windows that are not being used. Any number of windows may be 'rolled up' at any one given time.

For even greater flexibility, just as command-dragging will reposition windows behind other windows without bringing them to the front, command-double clicking will roll up windows that are behind other windows.

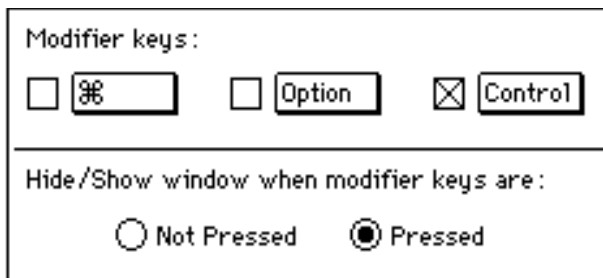
WindowShade has several options that are accessible through the Control Panel desk accessory. By opening the Control Panel, and clicking on WindowShade, a set of options will appear.



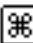
The controls allow you to change the way in which you hide and show windows. Any change in the settings that you make take effect immediately, so you can test your settings on the Control Panel window.



The first pane of the Control Panel allows you to change the number of clicks that are required to hide or show a window. Choosing 2 is for a double click, 3 for a triple click, etc.



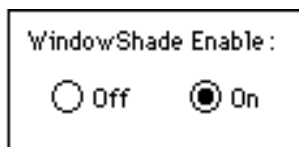
Modifier keys :

 Option Control

Hide/Show window when modifier keys are :

Not Pressed Pressed

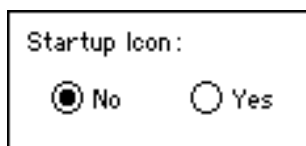
The second pane is for specifying that certain keys either must, or must not be pressed while clicking on a window title for WindowShade to operate. For example, in the above picture, the options are set such that the Control key must be pressed while clicking on the title bar of a window to hide or show it. By using the Not Pressed option, you can specify that WindowShade is to operate unless certain keys are being held down. For example, you might want WindowShade to hide or show a window unless the Command and Option keys are being held down.



WindowShade Enable :

Off On

The WindowShade Enable switch allows you to completely shut off WindowShade.



Startup Icon :

No Yes

The Startup Icon setting allows you to optionally display the WindowShade icon on the desktop when your Macintosh is starting up.

WindowShade does not work on rounded corner windows, such as the calculator desk accessory. When you double click on the title bar of a rounded corner window, nothing will happen. WindowShade will also not attempt to close windows that are complex shapes, such as circular or hexagonal windows.

Even though a considerable effort has been put into making WindowShade compatible with as many kinds of windows as possible, a couple of problems are known to exist. Please do not be alarmed if WindowShade cannot close a non-standard window properly.

I introduce WindowShade to the Public Domain. Please duplicate it freely, but only in its entirety, and without modification to the WindowShade program or its documentation.

Robert Johnston
1720 N. W. River Trail
Stuart, FL 34994
(407) 692-9199

WindowShade ©1989 Interactive Technologies, Inc.

All Rights Reserved